

**SOUTH FLORIDA**

# RICK CASE **HURRICANE** PREPAREDNESS & SURVIVAL **GUIDE**



**Make a Plan Now.  
Get Ready & Be Safe.**

[rickcasehurricane.com](http://rickcasehurricane.com)

## Inside

10 Quick Storm Tips

Tropical Storm & Hurricanes  
Facts & Terminology

Evacuate Or Stay

Broward & Miami-Dade  
County Evacuation  
Shelter & Contact Information

Building a Hurricane  
Preparedness Kit

Family Communications Stay  
in Contact

Prepare Your Home & Boat

The Storm Is Getting Close

The Hurricane has Arrived  
What to Expect

The Storm Has Passed  
It is Time to Exercise  
Great Caution

**Get Ready with  
Free Suggested Hurricane  
Preparation Lists and More:**

Protect Your Home  
Basic Supplies  
Food & First Aid & More  
Don't Forget Your Pets

- New for 2024 -  
**RICK CASE**   
quick info

Preparation Videos  
to Help You Get  
Ready for the 2024  
Hurricane Season



# Guide Index

To quickly go to a specific page, just click



10 Quick Storm Tips	3
Basic Hurricane Facts & Storm Terminology	4
Evacuate or Stay?	6
Evacuate to a Shelter/Out of Area	7
Broward County Evacuation Zones	8
Broward County Shelters	9
Miami-Dade County Evacuation Zones	10
Miami-Dade County Emergency Information	11
Building a Hurricane Preparedness Kit	12
Build a Family Communications Plan	13
Prepare your Home/Securing your Boat	15
The Storm is Getting Close	16
The Hurricane has Arrived - What to Expect	17
The Storm has Passed. Now What?	18
Check List • Home Preparedness	21
Check List • Basic Supplies for Hurricane Season	22
Check List • Basic Food/First Aid Supplies	23
Check List • Basic Supplies for your Pets	24
Broward, Miami-Dade County Contact Info	25
Preparing your Vehicle for Hurricane Season	26
Rick Case Hurricane Guide Download Links	27

This guide is intended to assist those wanting to prepare for hurricane season in South Florida. The suggested actions to prepare should be used as a starting point in preparing for hurricane season. This guide is not all-inclusive, and each individual will need to determine what actions to take and then prepare accordingly.

Portions of this Rick Case Hurricane Preparedness & Survival Guide has been created with assistance from Broward and Miami-Dade County Emergency Management, the Florida Department of Transportation Emergency Management and the U.S. Department of Homeland Security



fema.gov  
ready.gov

## Use this guide to prepare for the 2024 hurricane season.

Last year, South Florida evaded a direct hit from a hurricane. For 2024, weather forecasters are predicting an extremely active 2024 hurricane season, citing warm sea surface temperatures and less wind shear to break up these massive storms. Their forecast calls for 5 major hurricanes out of 11 total hurricanes. Will our luck hold out in 2024? If a storm approaches South Florida, all it takes is a slight shift of the storm's path and we could be in the cross hairs of damaging winds, rain, possible flooding, hail, and even tornadoes. Planning ahead is essential to keeping yourself and your family safe during a storm.

Raquel, Ryan, myself and all of the associates at the Rick Case Automotive Group are proud to provide this comprehensive digital hurricane preparedness guide. Using as a starting point, this guide will assist in identifying what actions and supplies you and your family will need to prepare and be ready should one of these massive storms threaten our area.

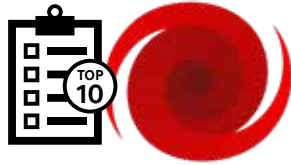
Throughout this guide, you will find suggestions on what to do to prepare your home, family, and pets for hurricane season. Lists for supplies, basic home preparation, food, first aid and even supplies for you pets. These preparation lists along and other vital hurricane information are also available to download for free at [rickcasehurricane.com](http://rickcasehurricane.com)



*Ryan Rita Raquel*

RICK CASE  
**Cares**  
GIVING BACK

# 10 Quick Tips



## Long before the storm

### **Make a plan. Decide if you should stay or go.**

Before the next approaching storm, make a plan for the entire family, including your pets. When a storm threatens South Florida, the decision to stay at home, head to a shelter, or flee the area should already have been determined. Each scenario is different. With each storm warning and based on the strength of the storm, if you plan to stay home, will your house stand up to the storm? If you head to a shelter, which one? And if you depart from the region, where will you go? These very important decisions should be a top priority long before the winds of the next hurricane start howling.

### **Stock up on hurricane supplies.**

Plan on being self-sufficient for at least three to five days in the event your power is out, roads around you are impassable and you can't get groceries. The most important item: drinking water. Have at least a gallon per day for each person in your family. Consider how much water you may need for your pets also. Keep a good supply and assortment of canned goods and nonperishable foods on hand. Don't forget pet food, and make sure you have the basics of a first aid kit.

### **Fill vehicles with gas - Get cash before a hurricane warning.**

Lines at service stations can be very long the day before the storm hits, and much worse in the days and perhaps even weeks after a storm. If forecasters feel the storm might be heading your way, fill your family's vehicles with gas. Get cash to purchase supplies after the storm. With recent storms and power outages, credit cards and ATM cards could not be used. Having cash will be the only way to make purchases until the power is restored.

### **Have portable power when you need it most.**

Over the past several years, when South Florida experienced the brute force of a hurricane, thousands of South Floridians lost power. Some for a few days, some for a few weeks. Don't leave your family in the dark. Have the power to keep your food fresh, charge your cell-phone, run medical equipment, lights and even run a small wall- unit air conditioning unit. Consider a quiet, reliable Honda Generator to keep you powered up during and after a storm.

### **Check shutters, clear the yard of loose items.**

Make sure your shutters are in good order. Make sure they fit properly. Make a numbered guide for each panel, matching a number to the window or door opening. If you have accordion/pull together shutters, clear the tracks free and clear of any debris/items that will prevent them from closing and locking properly. The day before the storm, bring or secure loose items outside your home. Bring in potted plants, secure pool or lawn furniture and other items that can become flying objects in a storm.

### **Secure insurance and important documents.**

Review your insurance policy. Review your coverage. Note specific phone numbers to call if you have to file a claim. If you have questions, call your insurance agent. Also gather up financial and personal documents like your more recent bank statements, passports, birth certificates and place these items in a zip lock plastic bag and place them in a safe place in your home.

### **Protect TVs, Stereos, sensitive electronics & digital data.**

Back up important digital information. Use a few USB flash drives or one of the many on-line backup services on the cloud. Update the apps on your smart phone and insert some websites that will help you through the storm. Perhaps a local news station weather app. Further in this guide you will find a listing of websites you may want to keep handy during a storm. When a hurricane warning is issued, power-down all computer and electronic equipment, like TVs and stereo systems, and unplug them from the wall outlets. Cover the electronics with plastic garbage bags, and if TVs are against a window opening, move the TV to the center of the room.

## During the storm

### **Hunker down, keep calm.**

You and your family should be in a strong interior room without windows if possible. If you have gas appliances, make sure the supply of gas is turned off. Unplug any unnecessary or sensitive electrical equipment. Don't go outside until you're sure the storm has ended. Winds will temporarily subside when the eye of the hurricane passes over. But the most severe winds of the storm can startup almost instantly as the eye wall passes. Stay inside.

## After the storm

### **Use extreme caution. Hidden dangers.**

People often incur serious injury or often die after a storm passes because they are unaware of possible hidden dangers. You and your family need to be extremely cautious when venturing outside after a storm. Take extra care on roofs or on ladders during clean-up. Beware of wading into puddles that might be hiding downed, live power lines. If you have lost power and plan on using a portable generator, make sure you place the generator far enough away from the home so as not to allow carbon-monoxide to creep into your home. Carbon-monoxide is a silent killer.

**Beware of Con-Persons.** Be careful of unscrupulous people who show up at your house, offering to fix your roof or any other repairs. Unfortunately, some people will take advantage of another's misfortune. They also may lack the skills and licenses required to do the work properly and by code. Before hiring anyone, check with your city's or county's licensing divisions.

### **Make sure your water supply is safe.**

Listen/monitor local government announcements and adhere to any boil-water orders. Often after a storm, municipality's water plants will lose water pressure because of a power loss to their pumps. It is at this time your water could become tainted. Always have a 3 to 5 day supply of bottled water to drink. A gallon a day for each member of your family. Be careful with any food in refrigerators if you have lost power. Use these food items first if possible.

**Make a Plan Now.  
Get Ready & Be Safe.**

Scan to download suggested hurricane preparation lists, Kids Hurricane Activity books, Broward and Miami-Dade County Emergency contact info, Generator Use Safety Guide FEMA Information and much more for free.

[rickcasehurricaneguide.com](http://rickcasehurricaneguide.com)





# Basic Tropical Storm & Hurricane Facts

The first thing to understand about tropical storms and hurricanes is what they really are. Tropical storms form over water and move toward land. Some tropical storms grow into hurricanes. Hurricanes have wind speeds greater than tropical depressions and tropical storms, and threats from hurricanes include powerful winds, heavy rainfall, storm surges, coastal and inland flooding, rip currents, possible tornadoes. Hurricane strengths fall into one of five categories, as shown below.

## Tropical Storm Watch

Tropical storm conditions with sustained winds of 39 to 73 mph in the area within 48 hours.

## Tropical Storm Warning

Tropical storm conditions with sustained winds of 39 to 73 mph in the area within 36 hours.

## Hurricane Watch

Hurricane conditions with sustained winds of 74 mph or higher are possible within the specified area in 48 hours. Keep yourself informed through local TV and/or Radio stations on the progress of the storm. Because hurricane preparedness activities become difficult once winds reach tropical storm force, the hurricane watch is issued 48 hours in advance of the anticipated onset of tropical-storm-force winds.

## Hurricane Warning

Hurricane conditions with sustained winds of 74 mph or higher are expected within 36 hours. Because hurricane preparedness activities become difficult once winds reach tropical storm force, the hurricane warning is issued 36 hours in advance of the anticipated onset of tropical-storm-force winds.

## The Saffir-Simpson Hurricane Wind Scale

<b>Category 1 Storm</b> 74-95 mph winds	<b>Dangerous winds will produce some damage.</b> The damage is primarily contained to shrubbery, trees, foliage and unanchored homes; no real damage to other structures.
<b>Category 2 Storm</b> 96-110 mph winds	<b>Moderate damage will occur.</b> Damage to shrubbery and tree foliage; some trees blown down. Major damage to exposed mobile homes. Some damage to roofing materials of buildings; some window damage. No major damage to buildings if protected properly.
<b>Category 3 Storm</b> 111-130 mph winds	<b>Extensive damage will occur.</b> Foliage torn from trees; large trees blown down. Some damage to roofing materials of buildings; some window and door damage. Some structural damage to small buildings. Mobile homes destroyed. Serious flooding at coast and many smaller structures near coast destroyed; larger structures near coast damaged by battering waves and floating debris.
<b>Category 4 Storm</b> 131-155 mph winds	<b>Extreme damage will occur.</b> Shrubs and trees blown down. Extensive damage to roofing materials, windows and doors. Complete failures of roofs on many small residences. Complete destruction of mobile homes. Major damage to lower floors of structures near shore due to flooding and battering by waves and floating debris.
<b>Category 5 Storm</b> 155+ mph winds	<b>Catastrophic damage will occur.</b> Shrubs and trees blown down. Massive damage to roofs of buildings. Complete failures of roofs on many residences and industrial buildings. Extensive shattering of glass in windows and doors. Some complete building failures. Small buildings overturned or blown away. Complete destruction of mobile homes. Major damage to lower floors of all structures less than 15 feet above sea level within 500 yards of shore due to flooding and battering by waves and floating debris.

Category 1



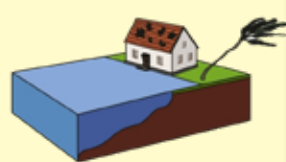
Minimal Damage

Category 2



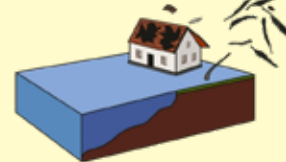
Moderate Damage

Category 3



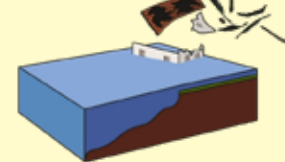
Extensive Damage

Category 4



Extreme Damage

Category 5



Catastrophic Damage

**Make a Plan Now.  
Get Ready & Be Safe.**

Scan to download suggested hurricane preparation lists, Kids Hurricane Activity books, Broward and Miami-Dade County Emergency contact info, Generator Use Safety Guide FEMA Information and much more for free.

[rickcasehurricane.com](http://rickcasehurricane.com)



# HONDA GENERATORS



## PREPARE FOR THE UNPREDICTABLE

Mother Nature and the Weather is anything but Predictable

**Invest in your safety. Invest in your family. Invest in your future.**

Hurricanes can disrupt our lives in unimaginable ways. From power outages that can last for days, even weeks, to the inevitable chaos that follows, it's important to have a reliable source of power that can keep your home and family safe. Are you and your family ready? Have power when you need it most.

Honda Generators offer unparalleled reliability. Honda is a name synonymous with long-term reliability.

Southeast Florida has avoided a direct hit over the past few years, though we definitely has some effects of storms. This hurricane season, if you lose power, you can count on a Honda Generator to kick into action, providing you and your family with the power you need for essential appliances and devices.

The time to prepare is now. Stop by the Rick Case Honda Powerhouse and find the correct generator for your power needs. Our knowledgeable generator specialists are here to help and guide you through the selection process. Plus, while supplies last, receive a heavy-duty/weather-proof/16 gauge/3 conductor extension cord with any generator purchase, a \$19.99 value, at no charge.

Have emergency power at the ready. Get ready. Be safe.



**Reliable Honda Generators**  
Starting at \$1099



# POWERHOUSE

15701 Rick Case Honda Way • Davie, FL • 954-364-3288

[rickcasehonda.net](http://rickcasehonda.net)





# Evacuate or stay?

## What you should know.

All evacuation orders issued by your local government agencies are based on the severity of the approaching storm and the forecast depth of the storm surge.

Storm surge is a dome of water that is pushed on land by the force of the wind. It happens fast and is extremely powerful, rushing over land and overtaking everything in its path. It is the greatest killer of people during hurricanes. Because the water comes fast, evacuations are done well in advance in those areas prone to storm surge.

- Six inches of storm surge can knock people off their feet.
- One foot of storm surge can float many vehicles.
- Two feet can sweep a car off the road.
- Storm surge can undermine, tear apart, or move buildings.
- Debris in the water makes it even more dangerous.

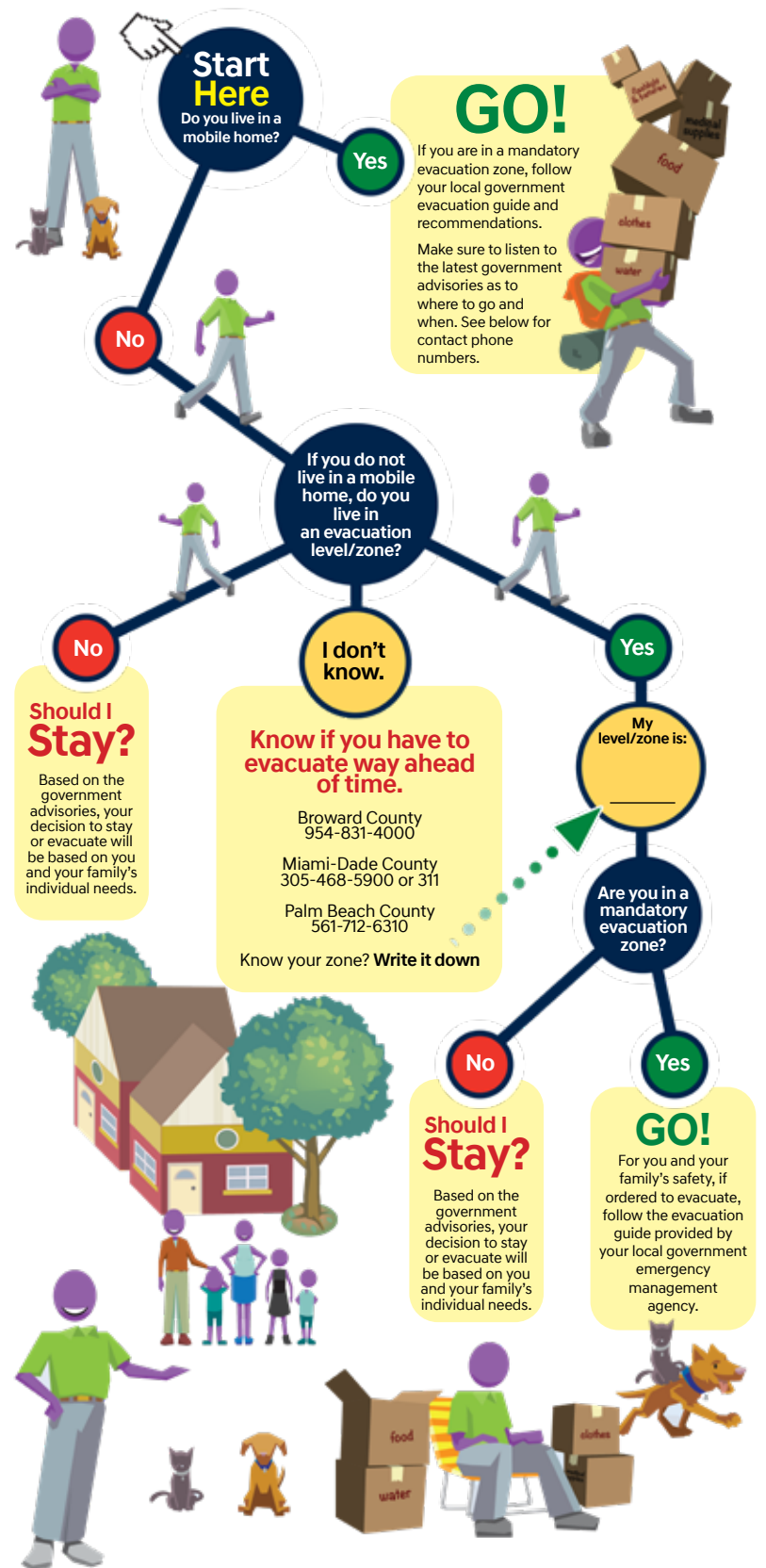
Water in your house is powerful. Consider that three feet of water in a 1,500-square-foot home weighs 135 tons. Compare that to an average pool, which holds 21 tons. You do not want to be in your house when it fills with water.

If you wait until the storm surge is coming to evacuate, it is too late. If you are NOT ordered to evacuate prior to a storm, no surge is expected at your location.

If you live in a high rise building in an evacuation zone don't make the mistake of thinking you will be safe if you stay on an upper floor. The higher the elevation, the stronger the winds will be. If water destroys the ground floor it can jeopardize the safety of the entire building. You also will be cut off from any assistance.

Play it safe. When local officials order an evacuation, evacuate.

## Use information from the local government advisories in making your decision to evacuate or stay.



# Evacuate to a shelter

**You have a few options if local or state authorities give the order to evacuate as a hurricane approaches.**

A hurricane evacuation shelter is a refuge of last resort; a place to go if you are in an evacuation zone, can't stay at home or with a relative, friend, or co-worker or nearby hotel. Shelters are set up in schools or other large solidly constructed buildings. The timing of the shelter's opening and locations can change due to the circumstances of each storm. Not all shelters are opened for every storm. Monitor local media/government agencies for current shelter openings and locations.

Shelters will have some food, but it is wise to bring your own non-perishable food, including snacks and any special dietary need foods. You cannot bring alcohol or guns to a shelter.

## What to bring to the Shelter

- Three-day supply of water per person (ex., three-gallons per person)
- Prescription medicines and emergency medications; you must be able to take all medications by yourself
- Special-diet foods (ex., snacks and juices for those with dietary restrictions or allergies)
- Basic snacks
- Bedding materials (ex., pillows, blankets, sleeping bags, cots, air mattresses, etc.) – Cots will not be provided
- Comfortable clothing (at least two changes)
- Collapsible/folding beach chair or camp chair
- Baby food, formula, bottles, diapers, blankets, & clothes
- Flashlight, extra batteries
- Cellphone, with a battery-operated charger
- Radio with extra batteries and headphones
- Important documents (ex., identification, medical records, insurance information, deeds or leases, birth certificates and utility bills showing your home address) – these documents are not required but will be helpful after an emergency
- Photocopies of valuable documents
- Eyeglasses, hearing aids, dentures
- Toiletries and personal hygiene items (ex., washcloth and/or towelettes, small towel, soap, toothbrush, toothpaste, sanitary napkins, tampons, paper towels, toilet paper, etc.)
- Quiet games, books, playing cards, favorite toys, or other items for entertainment
- Special items for family members who are elderly or disabled
- Chargers/cables for any electronic devices you bring with you – functional electric outlets are limited in shelters

# Evacuate out of the area

If you plan on evacuating out of the area where the storm is forecast, perhaps to a hotel, a friend or family member's home, timing and preparation is everything.

- Fill your vehicle's tank with gas.
- Get new windshield wipers and install
- Check on the condition of your tires/pressure.
- Bring a car charger for your cell phone.
- Pack a suitcase with clothes, food, personal hygiene items like toothpaste, toothbrush, etc..
- Bring important papers, such as homeowners and car insurance documents, registration and any other vitally important documents.
- Choose an evacuation route ahead of time, and have a back-up evacuation route just in case.
- Bring a map. Very important!
- Book hotel rooms or make arrangements to stay with relatives or friends outside of evacuation zone.
- Be patient. There will be a lot of other evacuees on the road, so traffic may be slow or backed up.
- Include as an Emergency Evacuation "kit" some if not all of the items above.
- Don't get lost or stranded. The 511 Traveler Info System has up-to-date traffic information, road conditions, etc. The best ways to get 511 Information is by dialing 511 on your phone, or just download the free Florida 511 mobile app.

## If you do need to evacuate, is your vehicle ready?

Make sure your vehicle is ready to go at a moments notice. Have your vehicle checked out long before a hurricane threatens South Florida. Rick Case Services all makes and models, and we can perform a complimentary 35 multi-point inspection of your vehicle at any Rick Case South Florida location.

**Scan to set-up an appointment today or go to [rickcase.com/servicefla.htm](http://rickcase.com/servicefla.htm) Then pick the Rick Case location nearest you to set-up a service appointment online.**



# Evacuation Zones

## IMPORTANT

Please check with Broward County Emergency Management for the latest information on evacuation zones and open shelters.

Broward County Emergency Management  
Hurricane Hot-line: 954-831-3900  
TTY: 954-831-3940

<https://www.broward.org/Hurricane/Pages/Evacuations.aspx>



### Evacuation Plan A

**For all hurricanes.** All residents east of the Intra-coastal Waterway, mobile home residents beside tidal bodies of water and in low-lying areas should evacuate.



### Evacuation Plan B

**For category 3, 4 and 5 hurricanes.** All residents east of U.S. 1 (Federal Highway), mobile home residents beside tidal bodies of water and in low-lying areas should evacuate.

If you live in an evacuation zone and an evacuation is ordered, you are required by law to evacuate.

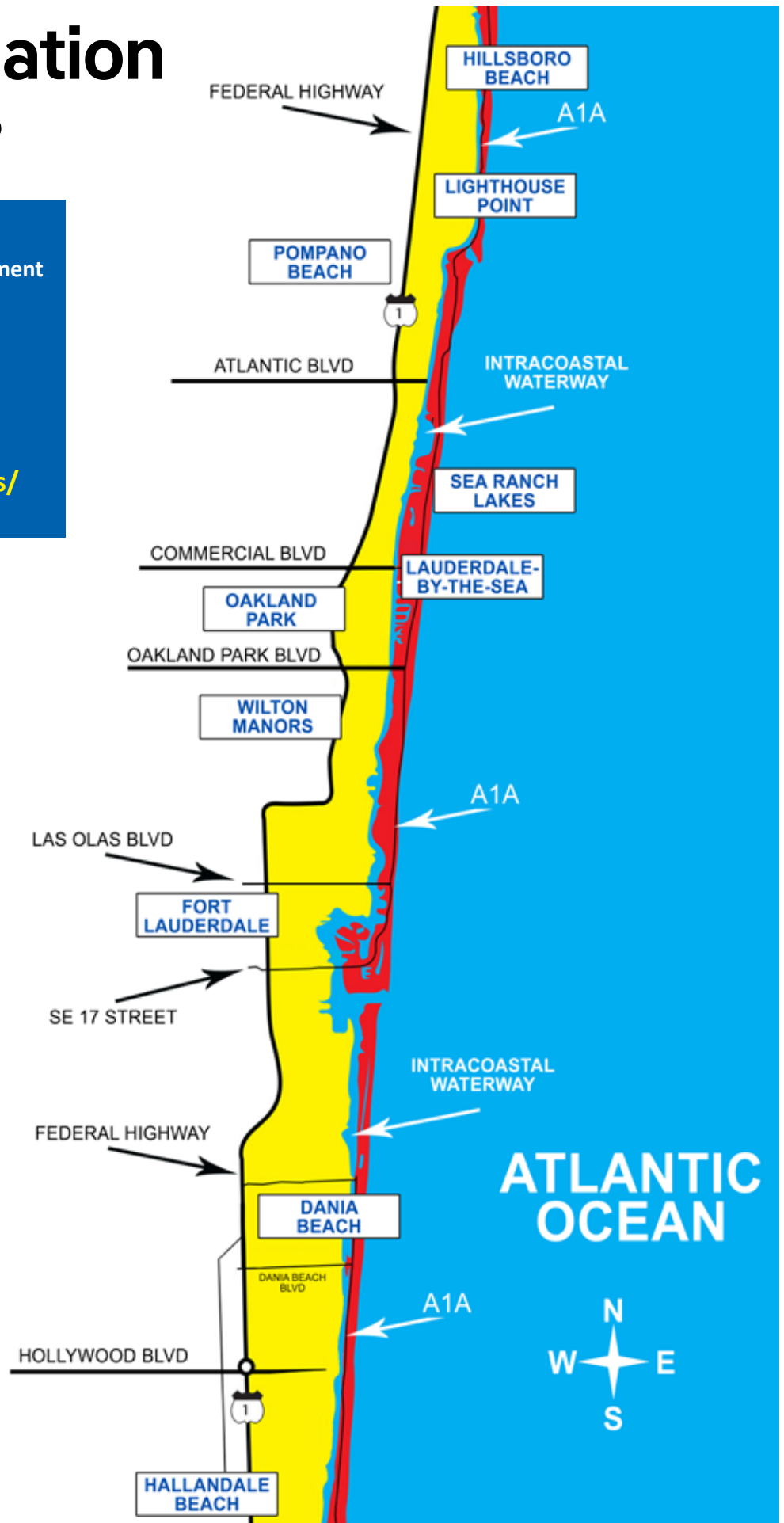
- Leave when local government officials issue a mandatory evacuation order for your area.
- Evacuate to a family or friend's home or hotel outside the evacuation area. Shelters provide for basic needs only and are a choice of last resort.
- Tell someone outside the storm area where you are going.
- Take your hurricane kit & important papers with you.

## Broward County Emergency Management

For more information, scan or go to the website below.



<https://www.broward.org/Hurricane/Pages/Default.aspx>





# Broward County Shelters

**Make a Plan Now.  
Get Ready & Be Safe.**

The Shelters listed below may not all open during a state of emergency.

They are opened as needed. If possible, staying with family or friends outside an evacuation zone is your first and best option. Monitor Broward County's website, [Broward.org/Hurricane](http://Broward.org/Hurricane), local television stations for actual shelter openings.

**Pet-Friendly Shelter:** Pet-friendly shelter(s) are available on a first-come basis. Pets accepted include: dogs, cats, domestic birds, rabbits, gerbils, guinea pigs, mice and hamsters. All pets must be in a carrier/ crate and all dogs must have a collar with leash. Must show proof of rabies certificate for dogs and cats and show their pet's Broward County Registration Tag. Evacuees should bring necessary care supplies for a week such as, supply of food and water, food/water bowls, cat litter and litter box, medicine, cleaning supplies, etc.

## IMPORTANT

Please check with Broward County Emergency Management for the latest information on evacuation zones and open shelters.

**Broward County  
Emergency Management**

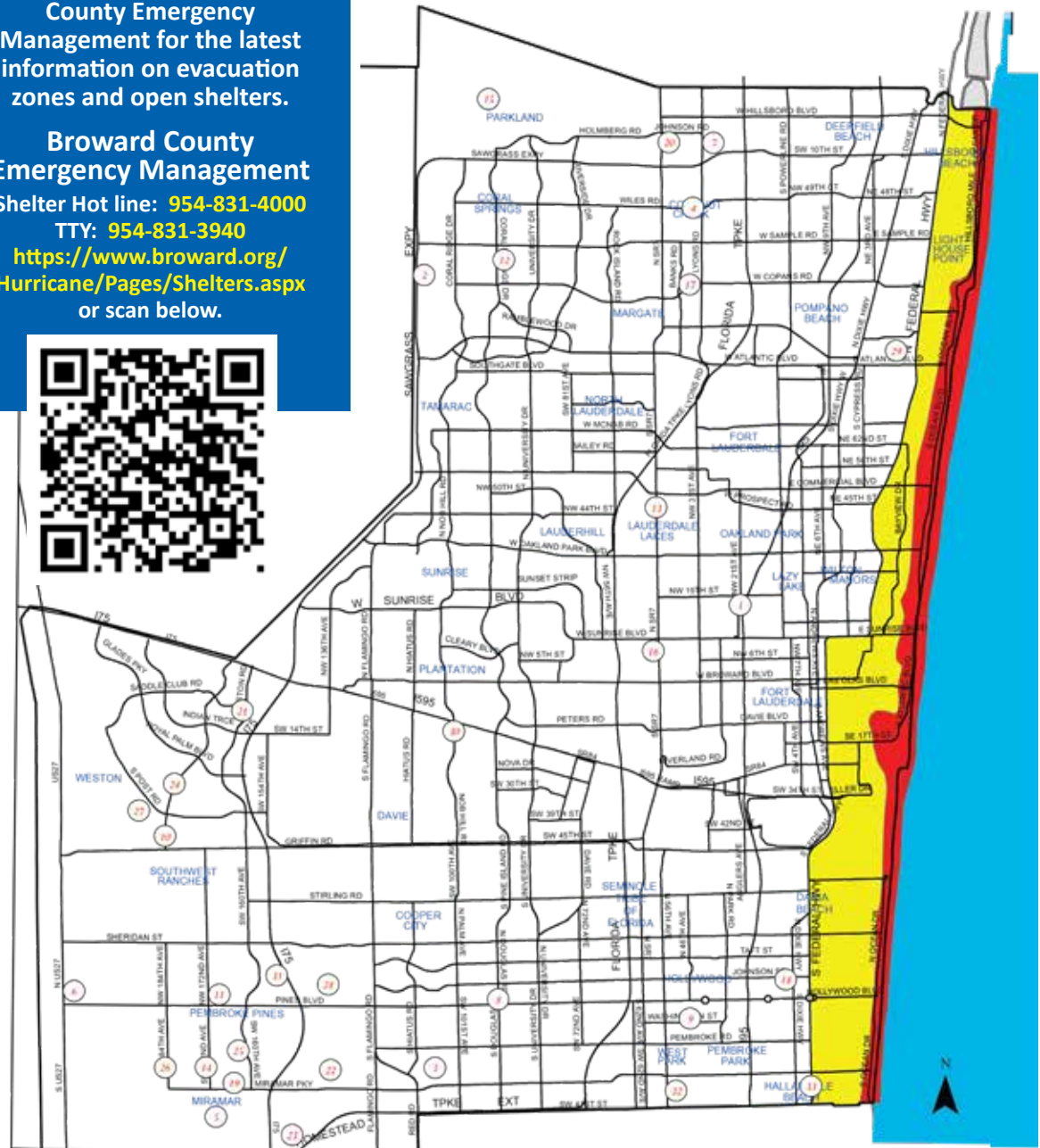
Shelter Hot line: **954-831-4000**

TTY: **954-831-3940**

<https://www.broward.org/Hurricane/Pages/Shelters.aspx>  
or scan below.



1. **Arthur Ashe/Rock Island**  
1701 NW 23rd Avenue, Ft. Lauderdale 33311
2. **Coral Glades High School**  
2700 Sports Plex Drive, Coral Springs 33065
3. **New Renaissance Middle School**  
10701 Miramar Blvd, Miramar 33025
4. **Monarch High School**  
5050 Wiles Road, Coconut Creek 33073
5. **Everglades High School - Pet Friendly**  
17100 SW 48th Court, Miramar 33027
6. **West Broward High School**  
500 NW 209th Avenue, Pembroke Pines 33029
7. **Lyons Creek Middle School - Pet Friendly**  
4333 Sol Press Blvd, Coconut Creek 33073
8. **Pines Middle School**  
200 NW Douglas Road, Pembroke Pines 33024
9. **Orange Brook Elementary School**  
715 S. 46th Avenue, Hollywood 33021
10. **Falcon Cove Middle School - Pet Friendly**  
4251 Bonaventure Blvd, Weston 33332
11. **Panther Run Elementary School**  
801 NW 172nd Avenue, Pembroke Pines 33029
12. **Parkside Elementary School**  
10257 NW 29th Street, Coral Springs 33065
13. **Park Lakes Elementary School**  
3925 N. State Rd 7, Lauderdale 33319
14. **Silver Lakes Elementary School**  
2300 SW 173rd Avenue, Miramar 33027
15. **Park Trails Elementary School**  
10700 Trails End Road, Parkland 33076
16. **Plantation Elementary School**  
651 NW 42nd Avenue, Plantation 33017
17. **Liberty Elementary School**  
2450 Banks Road, Margate 33063
18. **Beachside Montessori Village Elementary School**  
2230 Lincoln Street, Hollywood 33020
19. **Dolphin Bay Elementary School**  
16450 Miramar Parkway, Miramar 33027



20. **Miramar Tradewinds Elementary School**  
5400 Johnson Road, Coconut Creek 33073
21. **Gator Run Elementary School**  
1101 Glades Parkway, Weston 33327
22. **Coconut Palm Elementary School**  
13601 Monarch Lakes Blvd, Miramar 33027
23. **Coral Cove Elementary School**  
5100 SW 148th Avenue, Miramar 33027
24. **Everglades Elementary School**  
2900 Bonaventure Blvd, Weston 33331
25. **Silver Shores Elementary School**  
1701 SW 160 Avenue, Miramar 33027
26. **Sunset Lakes Elementary School**  
18400 SW 25th Street, Miramar 33029
27. **Manatee Bay Elementary School**  
19200 Manatee Isles Dr., Weston 33332
28. **Lakeside Elementary School**  
900 NW 136th Avenue, Pembroke Pines 33026
29. **Pompano Beach High School**  
600 NE 13th Avenue, Pompano Beach 33060
30. **Fox Trail Elementary School**  
1250 Nob Hill Road, Davie 33324
31. **Silver Palms Elementary School**  
1209 NW 155th Avenue, Pembroke Pines 33028
32. **Watkins Elementary School**  
520 NW 52nd Avenue, Pembroke Park 33023
33. **Hallandale Elementary School (Gulfstream Academy)**  
1000 SW 8th Street, Hallandale 33009

# Miami-Dade County Emergency Information

## IMPORTANT:

Please check with Miami-Dade County Emergency Management for the latest information on evacuation zones and open shelters.

Miami-Dade County Emergency Management  
Hurricane Hot-lines & Website:

**305-468-5900 • 311**






The Miami-Dade County Mayor can issue an Order directing the evacuation of specific areas of the county deemed to be in danger, based on a hurricane's track and projected storm surge.

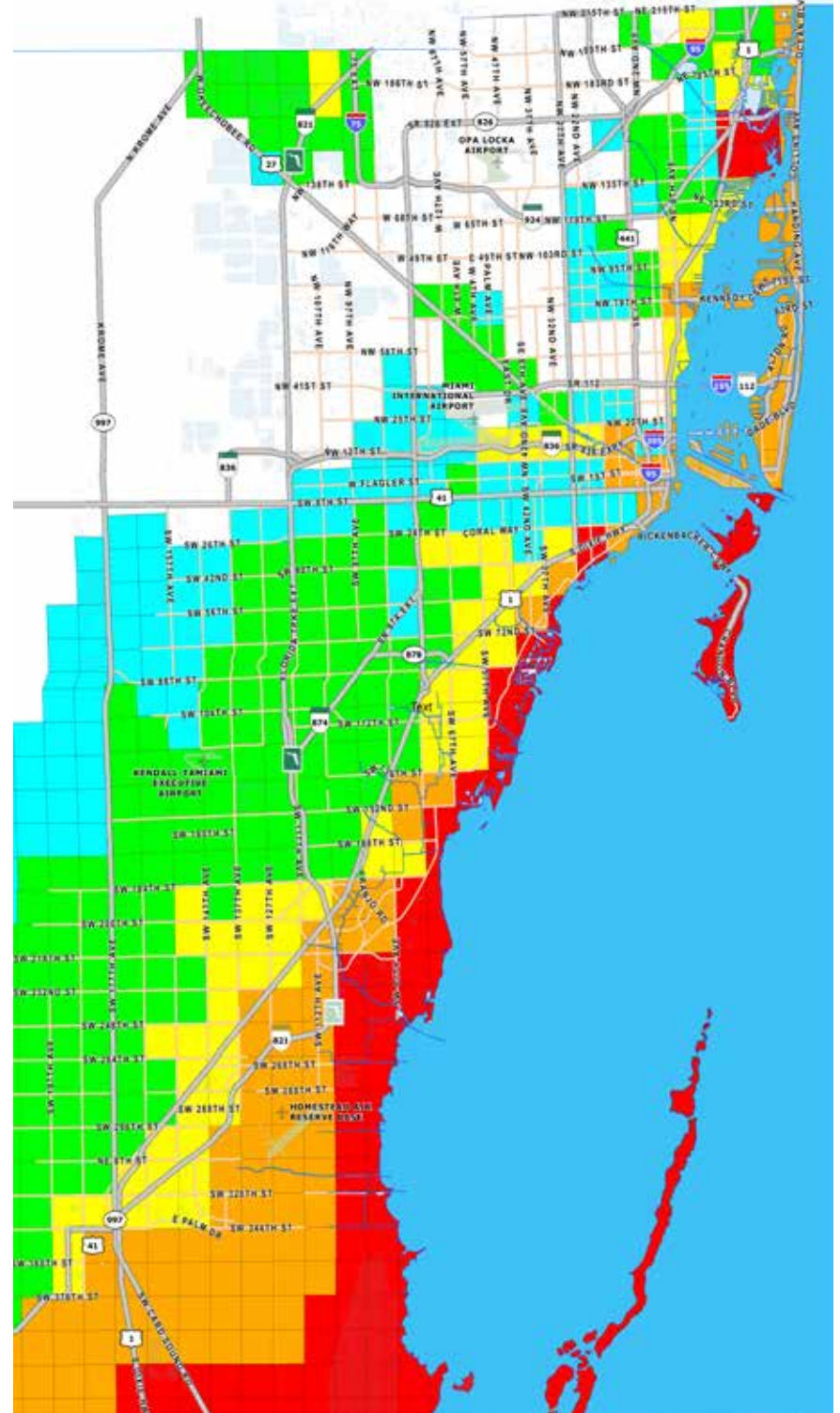
All mobile home residents should evacuate when any evacuation order is issued, regardless of their Storm Surge Planning Zone.

Residents are encouraged to stay with family or friends who live inland in a non-evacuation area. Evacuation centers should only be considered as a shelter of last resort. When an evacuation order is given, a list of open evacuation centers will be announced, along with emergency bus pick-up sites that will provide transportation to and from the centers.

Use the map on the right page to determine your location's storm surge risk. Five zones, marked A through E, identify the risk of storm surge.

These planning zones deal strictly with storm surge, not your flood zone.

-  **Zone A** is at greatest risk for storm surge for Category 1 and higher storms.
-  **Zone B** is at risk for storm surge for Category 2 and higher storms.
-  **Zone C** is at risk for storm surge for Category 3 and higher storms.
-  **Zone D** is at risk for storm surge for Category 4 and higher storms.
-  **Zone E** is at risk for storm surge from Category 5 storms.



For more information, scan this QR code or go to the website below.

<https://www.miamidade.gov/global/emergency/hurricane/home.page>





# Miami-Dade County Evacuation Information

## There are two types of evacuation instructions for Miami-Dade County:

**Evacuation recommendation:** The Mayor may recommend that certain residents take steps to evacuate due to their personal risk. A recommendation might be issued to residents who may need extra time to evacuate due to mobility challenges or people who live in areas prone to flooding that may not be in storm surge inundation areas.

**Evacuation order:** The Mayor may order residents of specific areas of the county deemed to be in danger, based on a hurricane's track and projected storm surge. Areas of the County that should evacuate will be announced through [miamidade.gov](http://miamidade.gov), by calling **311** and through local media.

Residents are encouraged to stay with family members or friends who live inland in a non-evacuation area. Hurricane evacuation centers will open, but should only be considered as a shelter of last resort.

Evacuation orders are issued by zones or partial zones. Find out if you live in an area that may be at risk for storm surge by using the Storm Surge Planning Zone Finder at: [miamidade.gov](http://miamidade.gov)

When an evacuation order is given you can find out if you need to evacuate by viewing the Evacuation Orders map.

Once an evacuation is announced, the list of open centers will become available on [www.miamidade.gov](http://www.miamidade.gov) or by calling 311.

Emergency bus pick-up sites will be activated to provide transportation to and from the evacuation centers.

If a designated pick-up site is not located near you, use Miami-Dade Transit to get to a pick-up location. Advise the bus operator of your intention to go to an emergency evacuation pick-up site.

Pet-friendly evacuation centers are available for residents living in evacuation areas, unsafe structures or mobile homes. Locations will be announced prior to the storm's arrival. Service animals are permitted at all evacuation centers.

Not every evacuation center location will open for every emergency. Decisions are based on the National Hurricane Center's forecast in order to determine when and where landfall will occur.

Each person/evacuee is allotted 20 square feet of space at the evacuation center, so please bring only essential items. All evacuation centers meet Americans with Disabilities Act requirements for sheltering. Service animals are permitted.

Details will be posted on [www.miamidade.gov](http://www.miamidade.gov) or by calling **305-468-5900** or **311**.

If you're unable to get to an evacuation center, the County has emergency evacuation bus pick-up sites you can use. Emergency evacuation bus pick-up sites are identified by a sign that reads "EMERGENCY EVACUATION BUS PICK-UP SITE."

The buses placed into service for the evacuation will have accessible wheelchair lifts and will have displays that read "EMERGENCY EVACUATION." These buses will only travel between emergency evacuation bus pick-up sites and evacuation centers.

For more information listen to local media, or call **311**.

## IMPORTANT:

Please check with Miami-Dade County Emergency Management for the latest information on evacuation zones and open shelters.

For more information concerning if you should evacuate, contact the **Miami-Dade County Emergency Management** Hurricane Hot-line: **305-468-5900** or **311** [www.miamidade.gov](http://www.miamidade.gov)

Use the map on the preceding page to determine your location's storm surge risk.

Five zones, marked A through E, identify the risk of storm surge.

Zone A is at greatest risk for Category 1 storms and higher.

These planning zones deal strictly with storm surge, not your flood zone.



For more information, scan this QR code or go to the website below.



<https://www.miamidade.gov/global/emergency/hurricane/home.page>



# Building a Hurricane Preparedness Kit

Below, a few basic items to include in your preparation. More detailed suggested **hurricane preparation check lists** are at the back of this guide, and are also available online to download for free with additional hurricane prep information at: [rickcasehurricaneguide.com](http://rickcasehurricaneguide.com)

## Basic Supplies

- Water—at least one gallon of water per person per day for drinking, and one gallon per person per day for hygiene and cooking.
- One-week supply of fluids to drink and nonperishable food that does not require cooking, for example: dried fruit, canned tuna fish, peanut butter, etc. (Remember comfort foods).
- Non-electric can opener.
- Medications and copies of prescriptions.
- Flashlight or lantern.
- Battery-operated or hand-crank radio.
- Extra batteries.
- First aid supplies—over-the-counter pain reliever, anti-diarrhea medicine/laxative, antihistamine, anti-itch cream, antiseptic, band-aids, cotton balls and swabs, etc.
- Sanitation—wipes, antibacterial hand gel, soap, toothpaste/tooth brushes, toilet paper, hygiene supplies, feminine supplies.
- Eyeglasses and extra contact lenses.
- Extra bottled oxygen if dependent on it.
- Cash from ATMs/Bank.
- Books, cards, board games for entertainment.
- Full tank of gas in vehicle.
- Portable Power Generator to help keep you and your family going when the power goes out. Consider a quiet, dependable, fuel-efficient Honda generator. Call **954-364-3289** for info.
- Cell phone with charger.
- USB Battery for cell-phone back-up.
- Contacts in mobile device.
- A paper map.
- Paper and pencil.
- Sunscreen.
- Insect repellent.

## If You Go

### Host Home or Hotel Go Kit

*In addition to basic supplies:*

- Pillow and blankets.
- Air mattress, sleeping bag(s), floor mat or other as needed.
- Food and water. Find out from the host what you can bring, including perishable food you have left.
- Paper plates, plastic cups and utensils.

**Check with your host to see what they need**

### Public Shelter Go Kit - General

*In addition to basic supplies:*

- Wearable medical alert tag.
- Air mattress, sleeping bag(s), floor mat and blankets as needed.
- Complete change of clothing for several days.
- Special dietary items (sugar-free, low sodium, gluten-free, etc.) with manual can opener if required. Most shelters will provide common food and water.
- Person hygiene- toothpaste/toothbrush, wipes, soap, shampoo, comb/hairbrush, deodorant, diapers and other personal items.
- Medications in original container.
- Wheelchair, walker or cane.
- Earplugs, headphones, sleep mask.
- Written instructions or orders regarding special care needed.
- Reading material; coloring books and crayons for kids; drawing tablets, small games.
- Pet Go Kit (only specific shelters allow) Most pet-friendly shelters require the preregistration of pets. Check ahead of time for the nearest pet-friendly shelter near you and review requirements.

## If you stay or when you return

### Stay at Home/Return Kit

*Even if you are evacuating, these supplies will be needed when you return.*

- Two weeks of fluids to drink and nonperishable food that does not require cooking, for example: dried fruit, canned tuna fish, peanut butter, jelly, etc. (Remember comfort foods).
- Paper plates, plastic cups and utensils.
- Cooler with ice (make extra ice in plastic zip-lock bags and/or plastic food storage containers and keep it in the freezer to keep food cold longer).
- Insect Repellent.
- Sunscreen.
- Tarps.
- Rope or elastic cords (for tarps).
- Tools including wrench to shut off water or gas lines; utility knife for sheeting, tarps. Duct tape, hammer and nails to make temporary repairs.
- Whistle to signal for help.
- Dust mask to help filter contaminated air.
- Sheets of plastic and duct tape to seal windows and doors if needed.
- Matches or lighter in waterproof container.
- Large garbage bags.
- Portable Power Generator to help keep you and your family going when the power goes out. Consider a quiet, dependable, fuel-efficient Honda generator. Call **954-364-3289** for more info.
- Extra propane or charcoal for outdoor grille.
- Extra gas if you have a generator. Store in a ventilated, safe area.
- Full tank of gas in vehicle.
- Battery-powered fan(s).
- Household chlorine bleach for cleaning/disinfecting; Also eyedropper to disinfect or treat water. (do not use scented, color-safe or bleach with added cleaners).

### Basic Supplies for Pets



- Enough pet food and water for two (2) weeks.
- Identification/chip (remember to update).
- License.
- Immunization records.
- Photo.
- Collar and leash.
- Medication for two (2) weeks with instructions.
- Cat litter, pan, scoop
- Plastic waste bags
- Toys/Blanket
- Disinfectant
- Paper towels
- Carrier or crate
- Newspaper or other lining

### TIP: Photo Inventory your Home & Contents



Using your cell phone or any camera, take outside pictures of your property from all sides. Then move inside and take panoramic pictures of each room. Photographing your property and personal belongings will aid if you need to file a claim after the storm with your insurance company.

# Create a Family Communications Plan

Get prepared now - create a family communications plan in the event of a hurricane.

## 1. COLLECT

Write down the contact information for everyone in your household. Also include other important contact information such as medical facilities, doctors, schools, veterinarians, insurance companies, and other services you may need in an emergency. Use the Free Family Communications Check-List and Wallet Contact Card. Scan Download for free. Scan the QR Code or download : [rickcasehurricane.com](http://rickcasehurricane.com)

## 2. SHARE

Once your list is complete, make copies and review with every family member. Suggest keeping the list in their wallet, backpack, or purse. You should also post a copy in a central location in your home, such as your refrigerator or family bulletin board. This will help you reconnect with others before, during and after a storm.

Create a group list on all mobile phones in your household as well as the other people you would need to communicate with before, during and after a hurricane.

**IMPORTANT:** In a wide-spread power outage, a text message may get through when a phone call will not. Text messaging requires far less bandwidth than a phone call. Text messages may also save and then send automatically as soon as signal becomes available.



# Create a Family Hurricane Survival Food & Supply List

## Start preparing now

The most important thing you can do for yourself, your family and your home is to start preparing now. Protect your home and get the supplies your family will need to survive a storm.

Start your hurricane season preparations now and you'll avoid the rush at home supply stores, grocery stores and other venues typically crowded, often chaotic and stressful when hurricane watches and warnings are issued.

The key to survival is to plan ahead, way ahead, and be ready.

You should stock the basics for your home: water, food, first aid supplies, clothing and bedding, tools and emergency supplies, and any specialty items required. Also, keep the items you would most likely need during an evacuation in an easy-to carry container. During the hurricane season, your emergency plan should also include a list of items that you can keep stocked in your home. Starting on page 24, use the suggested lists of those supplies to have ready.

No one wants to think about hurricanes, but it's better to be prepared to protect your home and family ahead of time. Over the past several hurricanes, when South Florida experienced the blunt force of a hurricane, thousands of South Florida residents lost their power. Have power when you need it most for keeping your refrigerator running cold, run medical equipment, lights, small appliances, charge cell-phones and even a small wall-unit air conditioner. Consider a quiet, dependable Honda Generator. Don't leave your family in the dark.

To begin to prepare, use the suggested **Rick Case Hurricane Guide Check Lists** at the back of this guide or scan above QR Code or download them at: [rickcasehurricane.com](http://rickcasehurricane.com)





**Make sure your generator is ready when you need it most.  
Don't leave your family in the dark.**



GENUINE  
**HONDA**  
GENERATOR  
SERVICE

**Service your Generator and insure  
Is it ready for the 2024 hurricane season.**

In South Florida, owning a generator is almost as common as owning a lawn mower. During hurricane season, it is the ability of having stand-by emergency power during and after the storm.

When power goes out and it is time to start your generator, that is not the time to find out there is an issue with your generator. Performing periodic generator maintenance tasks as described in your owner's manual will ensure that your generator will start and run when you need it most.

Save \$71 off our everyday low price with complimentary pick-up and delivery when performing this generator maintenance service at the Rick Case Honda Powerhouse.

Call today to arrange pick-up - **954-364-3289**  
or scan to set-up your generator service.



**Honda Generator  
Maintenance *Special***

**INCLUDES:**

- Comprehensive Multi-Point Generator Check
- Operational/Electrical Diagnostic & Inspection
- Clean Carburetor and perform full overhaul for proper air to fuel ratio
- Up to 3 Quarts of Genuine Honda 10w-40 GN4 Oil
- New Genuine OEM Honda Air Filter
- New Genuine Honda NGK Spark Plug.

**FINAL TEST:**

Perform Load Bank Test, making sure Maximum Electrical Output & Check all Receptacle Outlets to ensure proper working order

Regular Price:  
\$299.99

*On Sale for*

**\$228**

Save  
**\$71**  
with this coupon

**Limited  
Time Offer**

**Complimentary Pick-Up & Delivery  
of your Generator with this Special**

Not valid with any other offer, discount, coupon or Rewards Points. Price shown plus sales tax and any applicable shop supplies and/or waste disposal fees. Coupon must be presented at time of service write-up. Valid thru November 30, 2024.



**Rick Case Honda Powerhouse**

I-75 at Griffin Road • 15701 Rick Case Honda Way • Davie, Florida

**954-364-3289 • rickcasehonda.net**

Sales Hours: Tuesday - Saturday, 9 to 6 • Service & Parts Hours: Tuesday - Saturday, 9 to 6



# Prepare your home

## Roof \*

If possible, walk your roof now to check for any broken roof tiles, asphalt shingles, etc.. Be careful. Make sure all roof-top attic exhaust fans are hurricane rated and secure. Your roof is the most vulnerable part of your home, and takes the full brunt of a hurricane's high sustained winds.

## Protect Your Windows \*

Best option is to install impact resistant windows or hurricane shutters. Otherwise, be ready to cover your windows with commercial exterior plywood, 7/16" minimum thickness when a storm is approaching. Duct tape provides NO protection from high winds and flying debris. Covering your home's windows is the best and safest option.

## Prepare Your Yard

Sagging tree limbs are objects that could become deadly missiles in high winds. Keep your trees pruned well before hurricane season. Clean out your gutters on a regular basis.

When a storm is forecast to hit South Florida,

- Dispose of any piles of loose tree limbs or debris.
- Bring in all large yard items, such as furniture, grills, bird baths, lawn ornaments, etc..
- **Note:** The bottom of the pool is one storage option for outdoor furniture if indoor storage is not available.
- Bring in potted plants, solar lights and all small items.
- Do not drain your pool. Super chlorinate the water and turn off the electricity.

## Check Seals

Replace any worn out weather stripping or caulk around windows and doors.

## Brace Your Garage Door\*

Old garage doors in good condition can be braced with retrofit kits while new doors must meet stringent wind requirements. After Hurricane Andrew, engineers determined four out of five homes that suffered major structural damage lost their garage door first.

## Prepare Your Vehicle

- Keep up with your car's maintenance.
- Keep gas tank half full—fill tank during a hurricane watch.
- Build a survival kit for your car: first aid, nonperishable food/water, tire inflater, tool kit, jack and spare tire, jumper cable, road flares, flashlight, DC/AC power inverter, mobile device chargers, map with shelter locations.

**\*Protecting windows, roofs and garage doors are the most important steps to take.**

# Securing your Boat



No matter how seaworthy you or your boat is, you should not consider staying with your boat in a hurricane. Make preparations early and evacuate for your safety. Monitor weather and sea conditions closely. If watches or warnings are issued, do not venture onto the water. Use the tips below to develop a plan for your boat to minimize damage.

## Marina Slip or Private Dock Storage

- Create a hurricane plan for your boat and file a copy with the marina operator.
- Take a photographic inventory of your boat and its contents.
- Purchase and stow mooring line for the storm - the line should be about twice the diameter of normal line.
- When a storm is approaching, remove loose items on the deck; Bimini tops, dinghies, etc.. Store these on land. Shut off fuel lines at the tank.
- Keep batteries charged; make sure bilge pumps are operating properly.
- Keep insurance up-to-date.
- Secure hatches and doors.
- Double up on mooring lines and spring lines to secure the boat in its mooring.
- Use several cleats to distribute the load on the boat.
- Allow extra line for tide and storm surge.
- Where lines will rub, use several feet of chafing gear, such as a reinforced radiator hose on both sides where the lines will rub to protect them.
- Disconnect electrical, water and other dock connections.
- Remove valuables.

## Land Storage

- Store boat and trailer in a secure covered building, such as a garage, if possible.
- If left outside, secure using ground hooks and straps.
- Fill boat partially with water for stability. Keep water away from engine/batteries.
- Put wooden blocks between trailer frame and springs for extra support with added weight.

## Anchored Storage

- Remember the boat's position may change drastically during the storm.
- Anchor on the lee side of protective land rather than mooring to a dock.
- Use two anchors and no stern anchor.
- Line length should be six to nine times water depth for storm surge shift.
- Keep batteries charged; make sure bilge pumps are operating properly.

# The Storm is Getting Close

## What does “in the cone” mean?

The National Hurricane Center uses a graphic of a cone to show the probable track of a storm on weather forecasts. You can use it as a guide for the type of preparations you should make.

The closer the hurricane is, the more accurate the forecast. But be aware that hurricanes often shift direction at the last minute, so you need to be prepared if you are anywhere near the cone. Do not let your guard down.

As you make your final preparations, remain calm. After all, if you planned ahead and have your emergency supplies ready, all you need to do is to work your plan.

## Keep yourself informed of the latest storm advisories.

### 5-Day Cone

- If Southeast Florida is in the 5-day cone it means a storm is on a probable path to reach our area in five days.
- Implement your plan.
- Know your zone. If you do not already know your zone, look it up. See web links below.
- Review your family disaster plan.
- Get your survival kit and important papers ready.
- Begin to prepare your home and yard.
- If you have special needs, have your caregiver begin to implement your plan. If needed, be sure you are registered for a special needs shelter.
- You do not need to wait for an evacuation order if you do not wish to. Just remember, if you plan to evacuate to somewhere else in Florida there is no way to tell exactly where the storm will hit 5 days out.

### 3-Day Cone

- If Southeast Florida is in the 3-day cone it means a storm is on a probable path to reach our area in three days.
- Step up your preparations.
- Double check your survival kit and make any last necessary purchases.
- Gather special supplies for infants, children, seniors and pets.
- Be sure you have all materials and tools necessary to shutter windows.
- If your plans are to evacuate, make arrangements, book reservations and pack what you can in your vehicle.
- Refill medications. (If the Governor has declared a state of emergency that includes Broward, Dade or Palm Beach Counties, you can get a 30-day refill without the insurance company’s usual restrictions.

You do not need to wait for an evacuation order if you do not wish to. Just remember, if you plan to evacuate to somewhere else in Florida there is still time for forecasters to determine exactly where the storm will directly hit, even 3 days out. Follow the cone of probability in making your decisions. Time is critical at this point. You should have already made a plan.

**Keep checking the storm advisories from your local government announcements, local radio and television channels and the National Hurricane Center.**

### Hurricane Watch (48 hours ahead)

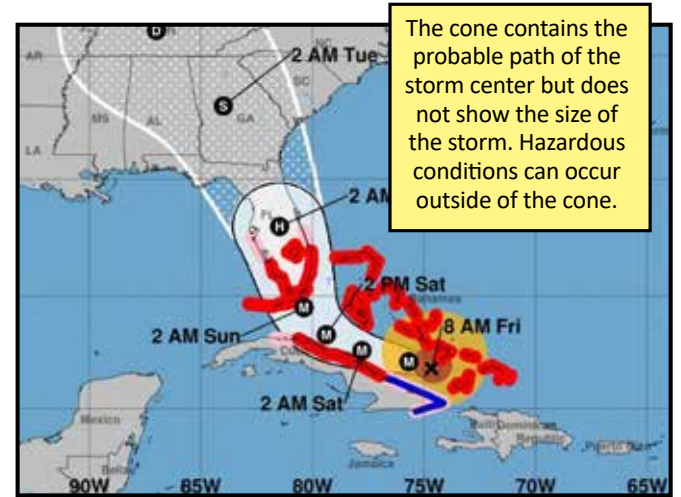
Prepare as if the storm is headed your way. Be ready for a Hurricane Warning within a few hours if the storm remains on track.

- Fill vehicle gas tank.
- Get cash from your bank/ATM, secure papers and valuables.
- If you could not refill your medications in the 3-day cone time-frame try again now. Fill containers and tubs with water, even if evacuating—you may need the water when you return.
- Secure yard equipment and furniture.
- Shutter your windows.
- If your plans are to evacuate the area if you are ordered to, secure your home so you can leave as soon as an evacuation order is issued.
- If you are registered for a special needs shelter and will be getting transportation, be sure you have everything you need for your Go Kit.
- You do not need to wait for an evacuation order. Just remember, if you plan to evacuate to somewhere else in Florida, be mindful of the latest storm advisories and storm path.
- Be prepared for an evacuation order to be issued at anytime.

### Hurricane Warning (36 hours ahead)

A hurricane warning means there is a high probability your area is going to start to experience tropical force winds in 12 to 24 hours, with the winds growing in intensification to hurricane force.

- Stay tuned to local news and get your weather radio ready.
- Complete final preparations to evacuate or to shelter in your home.
- If your plan is to travel out of the local area and you can leave at this point, go. You can expect traffic to get heavier as the hurricane nears.
- If you are registered for a special needs shelter and will be getting transportation, be ready to leave. Rescue workers will begin pick-ups shortly after an evacuation order is issued.
- If you are going to a host home, assist with home preparations and bring your emergency supplies there.
- You do not need to wait for an evacuation order. But the time to leave is now. Continue to monitor storm advisories.



### Evacuation Order

Listen carefully to the evacuation order from local government officials. What level or zone is being told to evacuate?

Are you in that level/zone?

If you do not live in the evacuation level/zone that is being told to evacuate, you do not have to leave your home. Review your plan and your decision on whether you will stay or go.

If you do live in a level/zone that has been ordered to evacuate, you need to plan to evacuate.

### Steps Before You Leave Your Home.

Turn off the water and gas utilities.

- Lock windows.
- Close all doors.
- Tell friends and neighbors where you are going.
- If you are evacuating locally, get to your shelter location within a few hours of the order.
- If you are going to a host home, go there now.
- Be aware of your evacuation time range. Orders for evacuations will be issued with beginning and end times. The end time means that sustained tropical storm force winds are expected to arrive by that time and all evacuations should be complete.

## Make a Plan Now. Get Ready & Be Safe.

If you prefer the old-fashioned way of tracking the season’s storms, scan or download for free the Rick Case Hurricane Tracking Chart, along with other vital hurricane prep information.



[rickcasehurricaneguide.com](http://rickcasehurricaneguide.com)



# The Hurricane has arrived. What to Expect.

The primary hazards from tropical cyclones (which include tropical depressions, tropical storms, and hurricanes) are storm surge flooding, inland flooding from heavy rains, destructive winds, tornadoes, and high surf and rip currents.

Once the hurricane winds start up, don't go outdoors or drive during the storm. Damaging winds and flying debris will make venturing outdoor dangerous.

Remain in your home and follow these suggested tips to help you keep your family safe as the storm passes over.

Stay inside and keep away from all windows, skylights and glass doors. Go to a safe area, such as an interior room without windows is usually the safest place. Have as many walls between you and the outside winds as possible. Sometimes strong winds and projectiles may tear hurricane shutters off, so stay away from windows even if they are covered. Close all interior doors. Secure and brace external doors. Closed doors will help prevent damaging hurricane winds from entering additional rooms.

Never go outside the protection of your home or shelter before there is confirmation that the storm has passed the area. Be aware that the calm "eye" is deceptive; the storm is not over. If the eye of the storm passes over your area, there will be a short period of calm, but at the other side of the eye, the wind speed rapidly increases to hurricane-force winds coming from the opposite direction. Stay indoors.

Listen to local television or radio for updates. Storm conditions may change quickly.

If you lose power, keep the refrigerator closed to keep cold air trapped and delay spoilage of perishable food. Have a supply of flashlights ready. Do NOT use candles. Use a portable radio to listen to important storm updates, information and instructions. Have extra batteries

readily available for the flashlights and portable radio. Turn off major appliances to reduce the power "surge" when electricity is restored. When electricity is restored, the surge from many major appliances starting at the same time may cause damage or destroy the appliances. Turning off or unplugging major appliances will allow you to decide when it is best to turn them back on.



If you use a portable generator, follow all the manufacturer's instructions. Generators should be properly grounded to prevent electrical shock and should never be operated indoors, in garages, basements or outdoors near any windows, doors or vents. Because generators produce carbon monoxide (CO), make sure you have a working CO detector in your home.

Follow your plan. You will hear howling winds and perhaps some noises/crashes of debris being blown around by the high winds. Most important, stay calm.

**Make a plan now.  
Get Ready. Be Safe**



# The Storm has Passed. Now What?

Do not attempt to venture outside or travel until after the storm completely passes the area. After it is confirmed by authorities that the storm has passed and it is safe to go outdoors, you can begin to assess any potential damage to your home and property.

There will be trees, electrical wires and other dangers on the roads. Without power, traffic lights will not be working, making driving very dangerous. It is highly likely that your workplace, children's schools and stores will be closed. Many roads and bridges are likely to be closed or blocked. Emergency crews will be dispatched as soon as conditions are safe to begin clearing major roads of debris and open up routes to reach hospitals, fire stations, police stations and other critical facilities. Be patient and stay home until officials announce it is safe to drive.

Again, traffic lights may still be out. Treat all intersections and locations where a traffic light is not working as an 4-way-all stop sign. Roads may still be littered with debris, so drive with extreme caution. Many routes may be flooded. NEVER drive through water. Use your best judgment. Turn around. Better to be safe.

If you stayed at home during the storm, be very careful when going outside after the storm. Hazards may be around your home and neighborhood.

- Avoid downed power lines. Never touch anything in contact with power lines, including water or water puddles that may be near the downed power lines.



- Protect your property from further damage by boarding up broken windows to help deter vandalism or additional weather damage. Arrange for reasonable temporary repairs.
- Be wary of any gas lines that may have been damaged or broken during the storm. If a gas leak is suspected, stay out of the property until the utility company deems it safe.
- Be cautious of hazards that are a product of the storm, such as water due to flooding, sharp or broken objects, damaged tree limbs or other structures that may have been damaged by high winds or water.
- Keep accurate records of your expenses and save bills and receipts from your temporary repairs. (Avoid making permanent repairs until your Insurance Claim Professional has reviewed the damage.) Keep accurate records of any other expenses incurred.
- Separate and inventory any damaged personal

property. Create a list of any damaged contents, including a description of the item, name of the manufacturer, brand name, age, as well as the place and date of purchase, if known. Include photographs, video of personal property inventories you may already have available.

- If you think your home might be unsafe due to storm damage, contact your insurance company to discuss finding temporary accommodations.

## You Evacuated - Will you now be able to get back home?

After an evacuation, it is possible many parts of your area will not be accessible due to damage, flooding, debris blocking major and neighborhood roadways, power-lines down along with other life threatening hazards. Access back to your home may not be possible. Coming home immediately is not a guarantee. Evacuees should stay tuned to social media along with local news on radio and TV for updates on flooded areas, road closures and when it is safe to return to your home or business.

When returning, be prepared with proper ID that identifies you and the address of your residential or business property for re-entry after a storm.

If you live or own a business on a barrier island, an Emergency Access Permit might be issued by your city and will aid in getting back to your home faster after an evacuation order. Inquire about an emergency access permit from your City Hall.

## What should I do when I return home?

- Avoid downed lines; there is no way to tell if they are electrical and if they are still live. Be sure to report downed lines to the Florida, Power & Light.
- Avoid flooded areas and standing water.
- Water may be contaminated or electrically charged from underground or downed power lines.
- Flood waters can contain raw sewage, bacteria, viruses and other germs that can cause disease. Use caution in areas where floodwaters have receded. Roads may have weakened and could collapse under the weight of a car.
- Do not enter a home that has major damage to the roof and/or walls. There is no way to know if it is safe.
- Watch for critters such as snakes, raccoons, opossums and insects that may have moved into your evacuated home, since they too look for shelter and relief from flood waters.
- Keep kids and pets with you. There could be dangerous conditions in the neighborhood, such as downed active power lines, fallen trees and debris.
- Photograph and list all damaged or lost items.
- Take photos of water in the house. Adjusters need evidence of the damage to prepare your estimate.
- Contact your insurance agent before starting work. Remove wet contents immediately to prevent mold. Wet carpeting, furniture, bedding and other items holding moisture can develop mold within 24 to 48 hours.
- Clean and disinfect everything that got wet. Mud left from floodwater can contain sewage and chemicals.
- For information on cleaning up after a flood, go to

[www.floodsafety.com/national/property/cleanup](http://www.floodsafety.com/national/property/cleanup)

- Get required permits before you start any home repair, improvement or construction and only hire a licensed contractor. Do not sign an Assignment of Benefits contract as a condition of having your home repaired.
- File your flood insurance claim as soon as possible.

## What is my responsibility during recovery?

Be prepared to take care of yourself and your family members for at least 3 to 5 days, if not longer. If a hurricane were to devastate the area, it could be a week before roads are cleared and opened so rescue workers can deliver water and basic food to the area. It could take weeks to restore basic services like power, and that affects grocery stores and other businesses. In other words, you may be on your own for quite a while, and you should prepare for this. This is why this preparedness guide was developed.

## Neighbors Helping Neighbors

In recent years, from Texas to Puerto Rico, the Florida Keys and the Florida Panhandle and all up the eastern United States seaboard, hurricanes have brought devastation to wide areas.



But the goodness of people was shown again and again as neighbors helped each other through the worst after each storm and aided each other in recovery.

Neighbors got together to share power and food, having block dinner parties to cook the perishable foods before they spoiled. Neighbors opened up their pool so neighbors could cool off. Helping each other to recover, carefully clean up debris and fallen trees.

Working together. Neighbor helping neighbor.



**Make a Plan Now.  
Get Ready & Be Safe.**

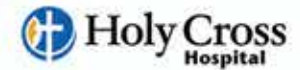




OVER 60 YEARS AUTOMOTIVE EXCELLENCE



BOYS & GIRLS CLUBS OF BROWARD COUNTY



Giving is at the Heart of Who We Are.







If you've been in an accident, or have damage to your vehicle from a storm, we're here to help.

Let our automotive repair professionals restore your vehicle back to original condition. **Call Rick Case first.** We'll handle everything.

- We Repair all Makes & Models
- Limited Life Time Warranty on Repairs
- ASE Certified Technicians
- Start to Finish Repairs



## COLLISION CENTER

I-75 at Griffin Road • 15700 Rick Case Honda Way • Davie  
855.384.9659

[rickcasecollisioncenter.com](http://rickcasecollisioncenter.com)



Only Rick Case Certified Best Value Pre-Owned gives you America's Best Used Car Warranty starting the day you buy it!

**10-Year/100,000-Mile Used Car  
Nationwide Powertrain Warranty &  
10-Year/24-Hour Used Car  
Nationwide Roadside Assistance**



1000s in Stock & Ready for Immediate Delivery

### Finance Plans for Everyone

Down Payment, rate and term will vary, based on amount financed and credit score.

We don't just sell cars, we buy cars too.  
Rick Case will buy your car even if you don't buy ours!  
**Get top \$\$\$ for your vehicle NOW!**



## PRE-OWNED

Superstores  
[rickcasebestvalue.com](http://rickcasebestvalue.com)



Current plus 7 model years back with less than 80,000 Miles. Excludes Factory Certified Pre-Owned Vehicles.



# Hurricane Preparedness & Survival Guide



## Prepare Now - Don't Wait

Don't wait until a hurricane watch is issued, because it may already be too late to take certain precautions to protect your home and property from the onslaught of a hurricane. Reduce property damage and get through any hurricane emergency with less stress by preparing **NOW**.

Hurricane force winds can turn landscaping materials into missiles that can break windows and doors. Much of the property damage associated with hurricanes occurs during and after the hurricane when rain enters structures through broken windows, doors and openings in the roof.

### Preparing your Home for Hurricane Season

- Remove any branches that overhang or touch the house. Pruning reduces wind resistance in trees, which makes them less likely to be blown down. Keep shrubbery trimmed, especially around window openings. Do this early enough so the trimmings can be hauled off before a hurricane. The time to trim back is at the beginning of hurricane season. If you wait until a hurricane is approaching, your municipality may not be able to pick-up your cuttings in time, and they could become projectiles in a major storm. If any of your trees are near power lines, hire a professional tree trimmer or have the utility company come out now to do the work.
- Use soft mulch materials, like shredded bark, which does less damage in a storm than loose stones or gravel that could become airborne.
- Install storm shutters to protect your windows from breakage, or fit plywood panels to your windows that are made from exterior grade or marine plywood that's at least five-eighths of an inch thick. Allow 4 inches or more for overlap.
- Make sure exterior doors are hurricane proof and have at least three hinges and a dead bolt lock.
- Sliding glass doors should be made of tempered glass and, during a storm, covered with shutters or plywood. These types of doors are much more vulnerable to wind damage than most other doors.
- Check garage doors and tracks; Check to make sure your garage is approved for both wind pressure and impact protection. Consider having special braces for your garage door from an licensed contractor, Wind coming into your home through an opening this large poses grave problems for the rest of your home—especially your roof.
- Check to make sure you can manually open your garage door with ease should you loose power and need to open the garage door after a storm passes.
- Protect attached structures. Make sure carports, porches and decks, entry canopies and sheds are structurally sound and firmly attached by local code and guidelines.
- Make sure all outside wall openings such as windows, vents, outdoor electrical outlets, garden hose bibs and locations where cables or pipes go through the wall are properly sealed. Use a high quality urethane-based caulk to prevent water penetration. Wind-driven rain can cause moisture damage in your home, even when the structure remains intact.

- Bring in all lose items out in the yard. Potted plants, grills, bird baths, solar lights, lawn/patio furniture, garbage cans, yard decorations and other light-weight items that can easily become air-born missiles in high winds.
- Clean out and make sure your rain gutters are free from debris that might prevent rain water runoff from going through your down pipes during the torrential rains that come with some hurricanes.
- Although tape can prevent glass from shattering everywhere, tape does not prevent the window from breaking. Shutters or wood paneling are best to use to protect windows during a hurricane.
- Inspect your roof if possible. Be careful if you walk on your roof, inspecting all openings such as attic fans and make sure the attic fan coverings are hurricane rated.
- Screened-in Patios. Remove and secure all furniture and loose items. Hanging fans - remove the fan blades from the fan.
- For carports, remove all items except a car. High winds will whip and flow into a carport, so anything light-weight such as garage cans and other small items will become airborne during a storm, causing damage to your vehicle parked there as well as your home.
- Be sure to lock all valuables and personal papers in a waterproof container.
- Check insurance policy for protection in case of flood or wind damage. Have your insurance contact phone numbers ready and available and place the policy papers in a waterproof container.
- Once a hurricane warning is issued, set refrigerator and freezer to the coldest temperature and fill zip lock bags with water and place inside your freezer. Pack your freezer with these as they will help keep any food cold for a short duration should you loose power.
- Locate your water, gas (if applicable) and electricity shut-off and keep in mind their locations just in case an emergency arises during or after a storm and you need to shut them off quickly.
- Flashlight with Extra batteries located in different sections of your home. Consider a small LED flashlight for each member of your family. Also, make them easy to find in the dark by using glow-in-the-dark tape or paint which will make the flashlight easy to find when the power goes out. Adhesive-backed tape holds its radiance for hours after exposure to light. Find it at home centers or online.
- \_\_\_\_\_
- \_\_\_\_\_
- \_\_\_\_\_
- \_\_\_\_\_
- \_\_\_\_\_
- \_\_\_\_\_
- \_\_\_\_\_
- \_\_\_\_\_
- \_\_\_\_\_
- \_\_\_\_\_

## IMPORTANT

**Protecting windows, door openings, roofs and garage doors are the most important steps that you can take to secure your home for any storm.**

### Take Pictures of Your Home, Inside & Out

Using your cell phone or any camera, take pictures of the inside and outside of your home prior to any storm that approaches.

#### Exterior -

- Take pictures of your home's roof from all sides of your home.
- Take pictures of all exterior walls. Take pictures of your garage door both open and closed, from the outside and inside.

#### Interior -

- Take panoramic pictures of each room.
- Take pictures of kitchen appliances; refrigerator, stove/oven, freezers etc..
- Take pictures of other electrical items, noting brand, model number and serial numbers if possible. NOTE: Making a list of your appliances, model numbers, serial numbers, as well as other electronic equipment like TVs, Stereo components and computers will facilitate the filing of a claim with your insurance agency if needed. Make copies of this list, placing one copy with your insurance policy in a water-proof container.
- Take pictures of any other specialty items such as paintings, works of art and those items.

- \_\_\_\_\_
- \_\_\_\_\_
- \_\_\_\_\_
- \_\_\_\_\_
- \_\_\_\_\_
- \_\_\_\_\_
- \_\_\_\_\_
- \_\_\_\_\_



Scan above to download this and other check lists available for for free at:  
**[rickcasehurricaneguide.com](http://rickcasehurricaneguide.com)**





# Hurricane Preparedness & Survival Guide




## Preparedness List for Supplies & Information

### Basic Supplies

- Water—at least one gallon of water per person per day for drinking, and one gallon per person per day for hygiene and cooking.
- One-week supply of fluids to drink and nonperishable food that does not require cooking, for example: dried fruit, canned tuna fish, peanut butter, etc. (Remember comfort foods).
- Paper plates, plastic cups and utensils.
- Cooler with ice (make extra ice in plastic zip-lock bags and/or plastic food storage containers and place in the freezer to keep food cold longer).
- Non-electric can opener.
- Medications and copies of prescriptions.
- Flashlight or lantern.
- Battery-operated radio.
- Battery-powered fan(s).
- Extra batteries flashlights, radio and fans.
- Tarps.
- Rope or elastic cords (for tarps).
- Tools including wrench to shut off water or gas lines; utility knife or sheeting, tarps. Duct tape, hammer and nails to make temporary repairs.
- Whistle to signal for help.
- Dust mask to help filter contaminated air.
- Sheets of plastic and duct tape to seal windows and doors if needed.
- Matches or lighter in waterproof container
- Large garbage bags
- First aid supplies—over-the-counter pain reliever, anti-diarrhea medicine/laxative, antihistamine, anti-itch cream, antiseptic, band-aids, cotton swabs, etc.. See suggested expanded list of first-aid items on page 26.
- Sanitation—wipes, toilet paper, hygiene supplies, feminine supplies.
- Personal supplies for each family member; antibacterial hand gel, soap, toothpaste/tooth brushes.
- Eyeglasses and extra contact lenses
- Extra bottled oxygen if dependent on it.
- Portable Power Generator to help keep you and your family going when the power goes out. Consider a quiet, dependable, fuel-efficient Honda generator. Call 954-364-3289 for more info.
- Extra gas for your generator. Store in a ventilated, safe area.
- Extra propane or charcoal for outside grille.
- Cash from ATMs/Bank.
- Books, cards, board games for entertainment.
- Full tank of gas in vehicle(s).
- Cell phone with charger, extra USB battery backup.
- Contacts in mobile device and in print for backup Information.
- Household chlorine bleach for cleaning/disinfecting;
- Sunscreen/Insect repellent
- \_\_\_\_\_
- \_\_\_\_\_
- \_\_\_\_\_
- \_\_\_\_\_

- \_\_\_\_\_
- \_\_\_\_\_
- \_\_\_\_\_
- \_\_\_\_\_
- \_\_\_\_\_
- \_\_\_\_\_
- \_\_\_\_\_
- \_\_\_\_\_
- \_\_\_\_\_
- \_\_\_\_\_

### The Basics - For Pets

- Enough pet food and water for two weeks
- Identification/chip (remember to update)
- License
- Immunization records (for shelters)
- Photo
- Collar and leash
- Medication for two weeks with instructions
- Cat litter, pan, scoop
- Plastic waste bags
- Toys/Blanket
- Disinfectant
- Paper towels
- Carrier or crate
- Newspaper or other lining
- \_\_\_\_\_
- \_\_\_\_\_
- \_\_\_\_\_
- \_\_\_\_\_
- \_\_\_\_\_
- \_\_\_\_\_

## Pet Friendly Shelters

Make sure to check with the emergency management division for your County to confirm the openings of the pet-friendly shelters in your area. Some pet-friendly shelter require preregistration so inquire as to what you need to do now to help keep your furry friend(s) safe from the storm.



### If You Plan to Evacuate

Make sure to check with the emergency management division for your County to confirm the openings of the shelters near you and the basic supplies the shelters will provide.

#### Host Home or Hotel (In addition to basic supplies)

- Pillow and blankets
  - Air mattress, sleeping bag(s), floor mats, etc.
  - Food and water. Find out from the host what you can bring, including perishable food you have left
  - Paper plates, plastic cups and utensils
- Check with your host to see what you should bring.

#### Public Shelter (In addition to basic supplies)

- Wearable medical alert tag.
  - Air mattress, sleeping bag(s), floor mat and blankets as needed.
  - Complete change of clothing for several days.
  - Special dietary items (sugar-free, low sodium, gluten-free, etc.) with manual can opener if required. Most shelters will provide common food and water).
  - Person hygiene (toothpaste/toothbrush, wipes, soap, shampoo, comb/hairbrush, deodorant, diapers and other personal items).
  - Medications in original container.
  - Wheelchair, walker or cane.
  - Earplugs, headphones, sleep mask.
  - Written instructions or orders regarding special care needed.
  - Reading material; coloring books and crayons for kids; drawing tablets, small games.
  - Pet Kit (only specific shelters allow pets)
- Most pet-friendly shelters require pre-registration of pets. Check ahead of time for the nearest pet-friendly shelter near you and review requirements.

- \_\_\_\_\_
- \_\_\_\_\_
- \_\_\_\_\_
- \_\_\_\_\_
- \_\_\_\_\_
- \_\_\_\_\_



Scan above to download this and other check lists available for free at:  
[rickcasehurricaneguide.com](http://rickcasehurricaneguide.com)



# Hurricane Preparedness & Survival Guide



### Food List

- 1 Gal of drinking water per day per person
- Dry cereal
- Canned fruits
- Canned vegetables
- Canned juice
- Canned Soups
- Canned ham, tuna, salmon, chicken, or turkey
- Canned stew/ravioli/meats
- Canned pasta
- Canned beans
- Peanut Butter
- Jelly/Jam
- Bread
- Bananas
- Apples
- Oranges
- Crackers
- Nuts and trail mixes
- Granola and energy bars
- Cookies
- Instant soup mixes
- Jerky, Dried Beef and Dried Sausage
- Rice
- Pasta
- Pasta Sauce
- Seasoning
- Oats
- Freeze-Dried Food Pouches
- Raman Noodles
- Condiments
- Macaroni and Cheese
- \_\_\_\_\_
- \_\_\_\_\_
- \_\_\_\_\_
- \_\_\_\_\_

### Baby Supplies

- Diapers
- Wipes
- Formula or baby food
- Bottles
- Rash ointment
- Medications
- Extra Blankets
- Moist Towelettes
- Antiseptic wipes
- \_\_\_\_\_
- \_\_\_\_\_
- \_\_\_\_\_
- \_\_\_\_\_
- \_\_\_\_\_
- \_\_\_\_\_
- \_\_\_\_\_

### Supplies:

- Portable Power Generator to help keep you and your family going when the power goes out. Consider a quiet, dependable, fuel-efficient Honda generator. Call 954-364-3289 for Info. .
- Manual can opener
- Paper towels
- Dish soap
- Aluminum foil
- Paper plates and cups
- Plastic utensils
- Plastic garbage bags, ties
- Plastic bucket with tight lid
- Ice Chest
- Soap, liquid detergent
- Strike-anywhere matches
- Food storage bags or containers
- Grill
- Charcoal
- Lighter
- Lighter fluid
- Flashlight
- Extra Batteries
- Rope
- Rain gear
- Plastic sheeting
- Disinfectant
- Household chlorine bleach
- Basic tool kit
- Toilet Plunger
- \_\_\_\_\_
- \_\_\_\_\_
- \_\_\_\_\_

### Personal Items

- Personal hygiene items
- Toothbrush/toothpaste
- Toilet paper
- Kleenex
- Moist towelettes
- Mosquito Repellent
- Feminine supplies
- Medications/Prescriptions
- \_\_\_\_\_
- \_\_\_\_\_
- \_\_\_\_\_
- \_\_\_\_\_
- \_\_\_\_\_

### Other:

- Cash
- Important documents
- Fully-charged cell phone
- USB Battery for cell phone charging
- Fill Vehicles with Gas

- Fill portable gas tank for generator
- Test start/run generator
- \_\_\_\_\_
- \_\_\_\_\_
- \_\_\_\_\_
- \_\_\_\_\_

### First Aid Kit - Suggested Supplies:

- Adhesive bandages, various sizes
- 5" x 9" sterile dressing
- Conforming roller gauze bandage
- Triangular bandages
- 3 x 3 sterile gauze pads
- 4 x 4 sterile gauze pads
- Roll of 3" cohesive bandage
- Germicidal hand wipes or waterless alcohol based hand sanitizer
- Antiseptic wipes
- Two pair large medical grade non-latex gloves
- Medical adhesive tape, 2" width
- Anti-bacterial ointment
- Cold pack
- Scissors (small, personal)
- Tweezers
- CPR breathing barrier, such as a dust mask
- NON-PRESCRIPTION DRUGS - Aspirin or non-aspirin pain reliever
- Anti-diarrhea medication
- Antacid (for stomach upset)
- Laxative
- Hydrogen Peroxide
- \_\_\_\_\_
- \_\_\_\_\_
- \_\_\_\_\_
- \_\_\_\_\_
- \_\_\_\_\_
- \_\_\_\_\_
- \_\_\_\_\_
- \_\_\_\_\_
- \_\_\_\_\_



Scan above to download this and other check lists available for for free at:  
[rickcasehurricaneguide.com](http://rickcasehurricaneguide.com)





## Hurricane Preparedness & Survival Guide



## Preparedness List for Your Furry Friends

Use this list as a guide to begin to get your pet ready for this year's hurricane season. Preparation is the best protection against the dangers of a hurricane, even for your pets. The items below are some basic suggestions of supplies to have on-hand now so your pet can ride out the storm with you.

Also, owners living in evacuation zones must pre-plan their evacuation and evacuate early as pet-friendly hotels, motels and County pet-friendly shelters fill quickly. Pet(s) may need to be preregistered to be allowed into designated pet-friendly evacuation shelter.

If evacuating, owners should prepare a pet survival kit for each pet.

Do not assume a kennel will take your pet in an emergency. Call ahead to find kennels in non-evacuation zones that could take your pet. Kennels require proof of vaccinations. Most County Animal Services cannot accept pets during an emergency. If you plan to stay with a family member or friend outside the evacuation zone, ask them now if you can bring along your pet.

If you plan on riding out the storm in your own home, of course your pet will be most comfortable there. Just make sure you have plenty of food and water and the other necessities shown below.

### Pet Supplies/Items for Evacuation and Stay at Home

- At least three to seven day supply of food & treats
- Manual can opener
- Food dish
- Water dish
- At least a three to seven day supply of bottled water
- One crate or carrier for each pet. Carrier should be large enough for the animal to stand and turn around
- Tag, muzzle, collar and leash
- Microchip Registration
- Photo of pet with owner
- Photo of any distinguishing marks on pet
- Veterinary records with rabies vaccination certificate and current license tag number
- Cat litter, litter box, litter scooper
- Small plastic bags for disposal of pet waste
- Puppy training pads
- Paper towels
- Disinfectant
- Plastic trash bags
- Hand sanitizer
- Pet "Quick Bath" wipes
- Pet Toys
- Blanket

### Important Miscellaneous Pet Items

- \_\_\_\_\_
- \_\_\_\_\_
- \_\_\_\_\_
- \_\_\_\_\_
- \_\_\_\_\_
- \_\_\_\_\_
- \_\_\_\_\_
- \_\_\_\_\_
- \_\_\_\_\_
- \_\_\_\_\_

## Keep your pets safe during a hurricane Season



Scan above to download this and other check lists available for for free at:

[rickcasehurricane.com](http://rickcasehurricane.com)



**Stay Connected Before, During, and After a Storm!**  
 Emergency Hotline: **311** or **954-831-4000**  
[www.Broward.org/Hurricane](http://www.Broward.org/Hurricane)

Emergency	911
24-hour Helpline for Crisis, Health, and Human Services Support	211
Broward County Hurricane Hotline	311 or 954-831-4000 / TTY 954-831-3940
Broward Emergency Management For Special Needs Shelter Registration	954-831-3902 / TTY 954-831-3940
Broward County School District Hotline	754-321-0321
FEMA Hotline	1-800-621-3362 / TTY 1-800-462-7585
Broward County Emergency Management	954-831-3900
Broward County Animal Care and Adoption	954-359-1313
Insurance State of Florida Department of Financial Services Helpline	1-800-22-STORM (78676) / TTY 1-850-413-3089
Price Gouging Hotline	1-866-966-7226
Broward County Environmental and Consumer Protection	954-357-5350
Broward County Solid Waste and Recycling Services	954-765-4999
Broward County Paratransit Services	1-866-682-2258
Broward County Transit	954-357-8400   TTY 954-357-8302
Homeless Information	954-563-HELP / 954-563-4357



## Important Contact Phone Numbers & Information

**Emergencies 911**

**Police Non-Emergencies** 305-4-Police (305-476-5423)

**Miami-Dade County**

311 or 305-468-5900 TTY: 711

miamidade.gov @MiamiDadeCounty @MiamiDade311

**Miami-Dade County Office Of Emergency Management**

miamidade.gov/oem @MiamiDadeEM

**Miami-Dade Fire Rescue**

miamidade.gov/fire @MiamiDadeFire

**Miami-Dade Police Department**

miamidade.gov/police @MiamiDadePD @MDPDenEspañol

**Family Social Services** 211 TTY: 305-644-9449

**Miami-Dade County Public Schools** 305-995-1000

www.dadeschools.net @MDCPS

**National Weather Service - Miami**

www.weather.gov/mfl/ @NWSMiami

**Florida Power & Light**

1-800-4-Outage (468-8243) TTY: 711

www.fpl.com @insideFPL

**Federal Emergency Management Agency (FEMA)**

1-800-621-FEMA (3362) | TTY: 1-800-462-7585

www.fema.gov @fema

**American Red Cross South Florida Region**

305-644-1200

www.redcross.org/local/florida/south-florida @SFLRedCross

**Price Gouging Complaints**

**Florida Office Of The Attorney General**

1-866-966-7226

**U.S. Department of Homeland Security**

www.ready.gov



# Preparing your Vehicle for Hurricane Season

As you are preparing your home, family and pets for the 2024 hurricane season, it is also just as important to ensure your vehicle is prepared and ready for Florida's hurricane season.

Why? If an evacuation is ordered for your area, or you plan on leaving the area as a storm approaches, you will need to rely on your vehicle to get you and your family to a safe location.

Rick Case Makes it Easy to make sure your vehicle is ready.

Take the worry out your vehicle's readiness by bringing it into any Rick Case location for a Free/Complementary Vehicle Hurricane Readiness Multi-Point Inspection. We'll make sure your vehicle is ready!



## RICK CASE COMPLEMENTARY Vehicle Hurricane Readiness Multi-Point Inspection

- ✓ **Fluid Levels** - oil, transmission, brake, power steering, coolant and windshield washer.
- ✓ **Tires** - Ensure they have adequate tread depth and are properly inflated.
- ✓ **Brakes** - Check for reliable performance, especially important in wet conditions.
- ✓ **Battery Inspection** - Test for proper operation.
- ✓ **Lights & Wipers** - Ensure for proper operation.

*Plus a whole lot more!*

Scan to set-up a service appointment or [CLICK HERE](#)



## A Hurricane Season Necessity - A Constant Full Tank of Gas

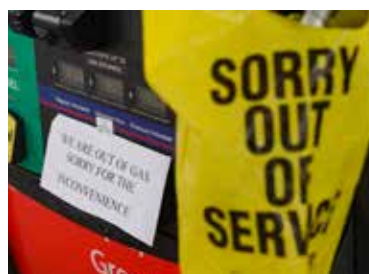
Keeping your vehicle's gas tank constantly full is essential preparation for hurricane season. A full tank allows for a smooth evacuation, avoiding time wasted at crowded gas stations with long lines and inflated prices. Also, if a power outage occurs, gas station might not have emergency power to pump gas. Similarly, topping off any gas-powered generators well ahead of storm warnings ensures you have fuel to run them if the power goes out. Advance preparation with gasoline prevents the stress and desperation of last-minute fuel shortages when a hurricane hits.

## Vehicle Emergency Kit Preparation

Having a well-stocked emergency kit is essential for your vehicle during hurricane season. The kit should contain water, non-perishable food, a first-aid kit for minor injuries, a flashlight, radio, and batteries for visibility and storm updates in case of power outages. It's also crucial to pack blankets, a raincoat or poncho, jumper cables, necessary medications, and other essentials. When a hurricane warning is issued and evacuation is ordered for your area, take the emergency kit with you if evacuating. If you plan to stay home and ride out the storm, place the kit in your vehicle beforehand in case you need to make an emergency evacuation during the storm.

## Vehicle Protection Strategies

To minimize hurricane damage to your vehicle, park inside a garage if possible. Garages provide a protective barrier against high winds and flying debris. If no garage is available, park in an open area away from trees and power lines to reduce the risk of damage from falling branches and debris.





# Free downloads available at [rickcasehurricaneguide.com](http://rickcasehurricaneguide.com)

Protect your family against hurricanes this season by downloading this essential hurricane preparation guide. Click [HERE](#).

Visit [rickcasehurricaneguide.com](http://rickcasehurricaneguide.com) to find a free comprehensive collection of hurricane preparation resources, including checklists for securing your home, food and first aid supplies, tips for keeping your pets safe, emergency contact information for Broward and Miami-Dade counties, generator safety instructions, hurricane terminology definitions, FEMA guidance, children's hurricane preparation activities and coloring booklets, and much more.



**Make a Plan Now.  
Get Ready & Be Safe.**

Download Free Hurricane Preparation Resources

**Click ▶ or Scan**



# RICK CASE

NEW FOR  
2024



90 Second Hurricane Information Videos to Get You Started in Preparing for Hurricane Season on



Prepare Before Hurricane Season

Know your Risks

Take Action Now

Understanding Hurricane Forecasts

Get Moving when a Storm Approaches

Stay Protected

Use Caution After the Storm Passes

Click to Watch all 7 Essential Videos







Automotive Group



# RICK CASE



## Save time.

Shop & buy online, & we'll get you in & out in 90 minutes or less,

### Guaranteed.

If we don't, Rick Case will make your first month's payment.

Credit application must be completed through the dealership's express store to qualify. See Dealer for complete program details.

### Rick Case Honda

15700 Rick Case Honda Way  
Davie, FL 33331

**888-332-2353**

WEBSITE

CURRENT SPECIALS

SERVICE APPOINTMENT



### Rick Case Hyundai

3550 Weston Road  
Davie, FL 33331

**888-618-1568**

WEBSITE

CURRENT SPECIALS

SERVICE APPOINTMENT



### Rick Case Genesis

3550 Weston Road  
Davie, FL 33331

**888-618-1568**

WEBSITE

CURRENT SPECIALS

SERVICE APPOINTMENT



### Rick Case VW

3520 Weston Road  
Davie, FL 33331

**888-603-9672**

WEBSITE

CURRENT SPECIALS

SERVICE APPOINTMENT





IONIQ



EZGO



PRE-OWNED Superstores



### Rick Case Alfa Romero

3500 Weston Road  
Davie, FL 33331

855-286-9728

WEBSITE

CURRENT SPECIALS

SERVICE APPOINTMENT



### Rick Case Maserati

3500 Weston Road  
Davie, FL 33331

855-286-9728

WEBSITE

CURRENT SPECIALS

SERVICE APPOINTMENT



### Rick Case Kia

14500 West Sunrise Blvd.  
Sunrise, FL 33323

888-603-0957

WEBSITE

CURRENT SPECIALS

SERVICE APPOINTMENT



### Rick Case Acura

875 North State Road 7  
Fort Lauderdale, FL 33317

888-596-9647

WEBSITE

CURRENT SPECIALS

SERVICE APPOINTMENT



### Rick Case Hyundai

925 North State Road 7  
Fort Lauderdale, FL 33317

866-270-0168

WEBSITE

CURRENT SPECIALS

SERVICE APPOINTMENT



### Rick Case Genesis

925 North State Road 7  
Fort Lauderdale, FL 33317

866-270-0168

WEBSITE

CURRENT SPECIALS

SERVICE APPOINTMENT



### Rick Case EZGO

15701 Rick Case Honda Way  
Davie, FL 33331

954-364-3290

WEBSITE

CURRENT SPECIALS

SERVICE APPOINTMENT



### Rick Case Honda Powerhouse

15701 Rick Case Honda Way  
Davie, FL 33331

954-364-3290

WEBSITE

CURRENT SPECIALS

SERVICE APPOINTMENT





# Thank You South Florida

You made the Rick Case Automotive Group one of the Nation's largest family-owned-and-operated automotive dealer groups.

For over 60 years, Rick Case has been dedicated to treating every customer as we would our best friend. That's why generations of South Floridians have made Rick Case their choice for vehicle sales and service.

We invite you to experience that hometown service for yourself at any Rick Case Dealership



**OVER 60 YEARS** **AUTOMOTIVE EXCELLENCE**



rickcase.com Our Customers, Our Friends